

DANRE atf4 Antibody (C-term)
Affinity Purified Rabbit Polyclonal Antibody (Pab)
Catalog # Azb10008a

Specification

DANRE atf4 Antibody (C-term) - Product Information

Application	WB,E
Primary Accession	Q6NW59
Reactivity	Zebrafish
Host	Rabbit
Clonality	Polyclonal
Isotype	Rabbit IgG
Antigen Region	288-314

DANRE atf4 Antibody (C-term) - Additional Information

Gene ID 406514

Other Names

Cyclic AMP-dependent transcription factor ATF-4, cAMP-dependent transcription factor ATF-4, Activating transcription factor 4, atf4 {ECO:0000312|ZFIN:ZDB-GENE-040426-2340}, atf4b1

Target/Specificity

This DANRE atf4 antibody is generated from rabbits immunized with a KLH conjugated synthetic peptide between 288-314 amino acids from the C-terminal region of DANRE atf4.

Dilution

WB~~1:1000

E~~Use at an assay dependent concentration.

Format

Purified polyclonal antibody supplied in PBS with 0.09% (W/V) sodium azide. This antibody is purified through a protein A column, followed by peptide affinity purification.

Storage

Maintain refrigerated at 2-8°C for up to 2 weeks. For long term storage store at -20°C in small aliquots to prevent freeze-thaw cycles.

Precautions

DANRE atf4 Antibody (C-term) is for research use only and not for use in diagnostic or therapeutic procedures.

DANRE atf4 Antibody (C-term) - Protein Information

Name atf4

Synonyms atf4a {ECO:0000312|ZFIN:ZDB-GENE-040426-

Function Transcription factor that binds the cAMP response element (CRE) (consensus: 5'-GTGACGT[AC][AG]-3') and displays two biological functions, as regulator of metabolic and redox processes under normal cellular conditions, and as master transcription factor during integrated stress response (ISR) (By similarity). Binds to asymmetric CRE's as a heterodimer and to palindromic CRE's as a homodimer (By similarity). Core effector of the ISR, which is required for adaptation to various stress such as endoplasmic reticulum (ER) stress, amino acid starvation, mitochondrial stress or oxidative stress. During ISR, atf4 translation is induced via an alternative ribosome translation re- initiation mechanism in response to eif2s1/elf-2-alpha phosphorylation, and stress-induced atf4 acts as a master transcription factor of stress-responsive genes in order to promote cell recovery (By similarity). Promotes the transcription of genes linked to amino acid sufficiency and resistance to oxidative stress to protect cells against metabolic consequences of ER oxidation (By similarity). In the absence of stress, atf4 translation is at low levels and it is required for normal metabolic processes such as embryonic lens formation, fetal liver hematopoiesis, bone development and synaptic plasticity (By similarity). Acts as a regulator of osteoblast differentiation by promoting expression of osteoblast-specific genes (By similarity). Regulates the circadian expression of the core clock components. Mainly acts as a transcriptional activator in cellular stress adaptation, but it can also act as a transcriptional repressor (By similarity).

Cellular Location

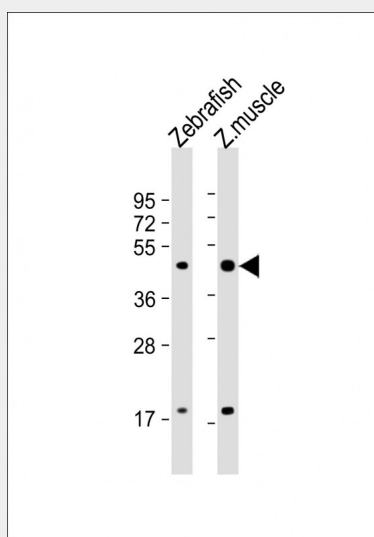
Nucleus {ECO:0000250|UniProtKB:P18848}.

DANRE atf4 Antibody (C-term) - Protocols

Provided below are standard protocols that you may find useful for product applications.

- [Western Blot](#)
- [Blocking Peptides](#)
- [Dot Blot](#)
- [Immunohistochemistry](#)
- [Immunofluorescence](#)
- [Immunoprecipitation](#)
- [Flow Cytometry](#)
- [Cell Culture](#)

DANRE atf4 Antibody (C-term) - Images



All lanes : Anti-(DANRE) atf4 Antibody(C-term) at 1:1000 dilution Lane 1: Zebrafish lysate Lane 2: Zebrafish muscle lysate Lysates/proteins at 20 µg per lane. Secondary Goat Anti-Rabbit IgG, (H+L), Peroxidase conjugated at 1/10000 dilution. Predicted band size : 37 kDa Blocking/Dilution buffer: 5% NFDM/TBST.

DANRE atf4 Antibody (C-term) - Background

Transcriptional activator. Binds the cAMP response element (CRE) (consensus: 5'-GTGACGT[AC][AG]-3'), a sequence present in many viral and cellular promoters (By similarity).